

- District 1, 1.766 Acres
- District 2, 101.084 Acres
- District 3, 46.456 Acres

GOLDEN EAGLE ACRES, INC.

**RESIDENTIAL SUBDIVISION
SECTION 6, T6N, R66W, 6th P.M.
WELD COUNTY, COLORADO**

REV: 8-15-18



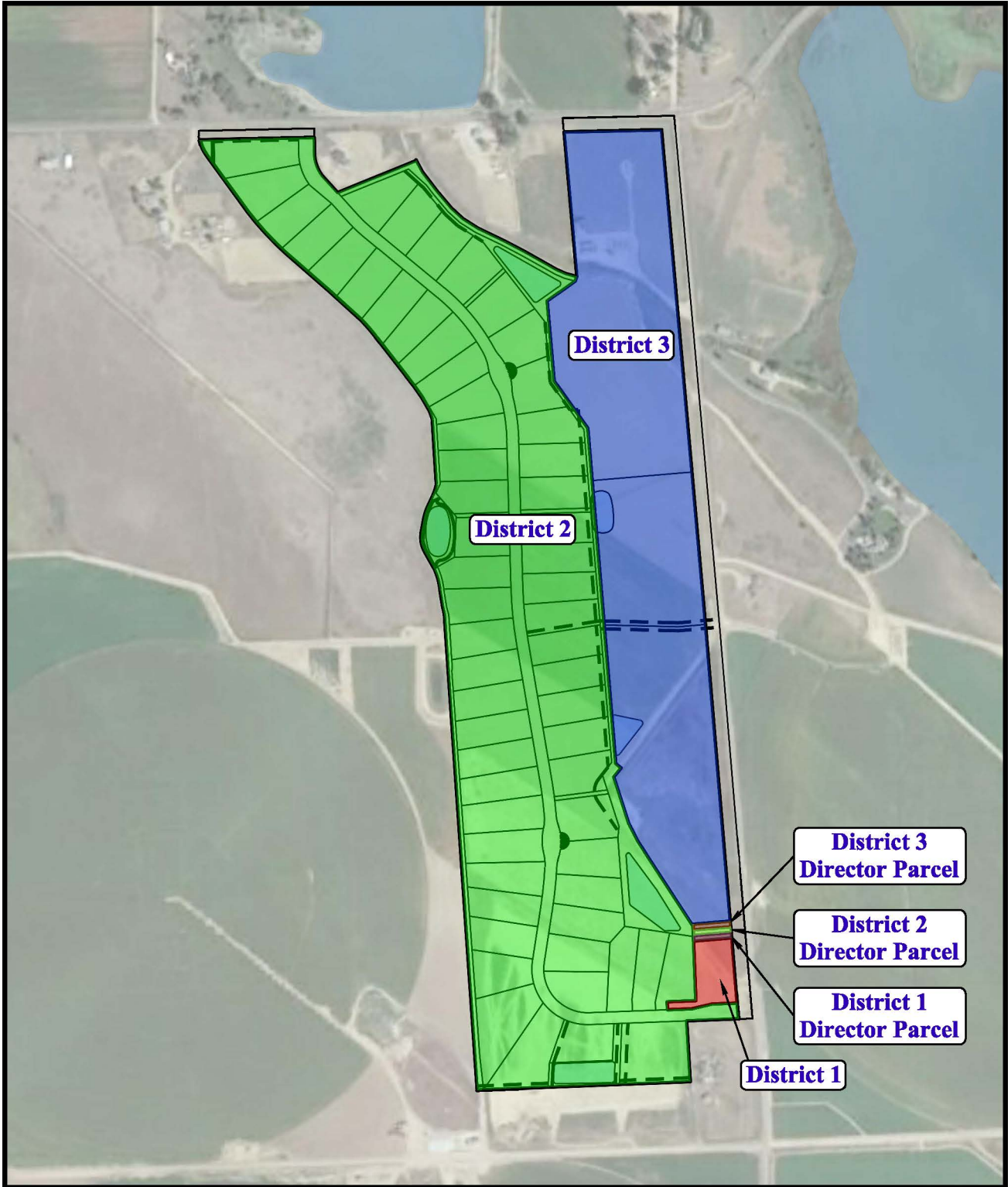
DRAWN BY: D.B.S.

DATE DRAWN: 12-23-2016

District Boundaries



UELS, LLC
Corporate Office * 85 South 200 East
Vernal, UT 84078 * (435) 789-1017



- District 1, 1.766 Acres
- District 2, 101.084 Acres
- District 3, 46.456 Acres
- District 1 Director Parcel, 0.125 Acres
- District 2 Director Parcel, 0.125 Acres
- District 3 Director Parcel, 0.125 Acres

GOLDEN EAGLE ACRES, INC.

**RESIDENTIAL SUBDIVISION
SECTION 6, T6N, R66W, 6th P.M.
WELD COUNTY, COLORADO**

REV: 8-15-18



DRAWN BY: D.B.S.

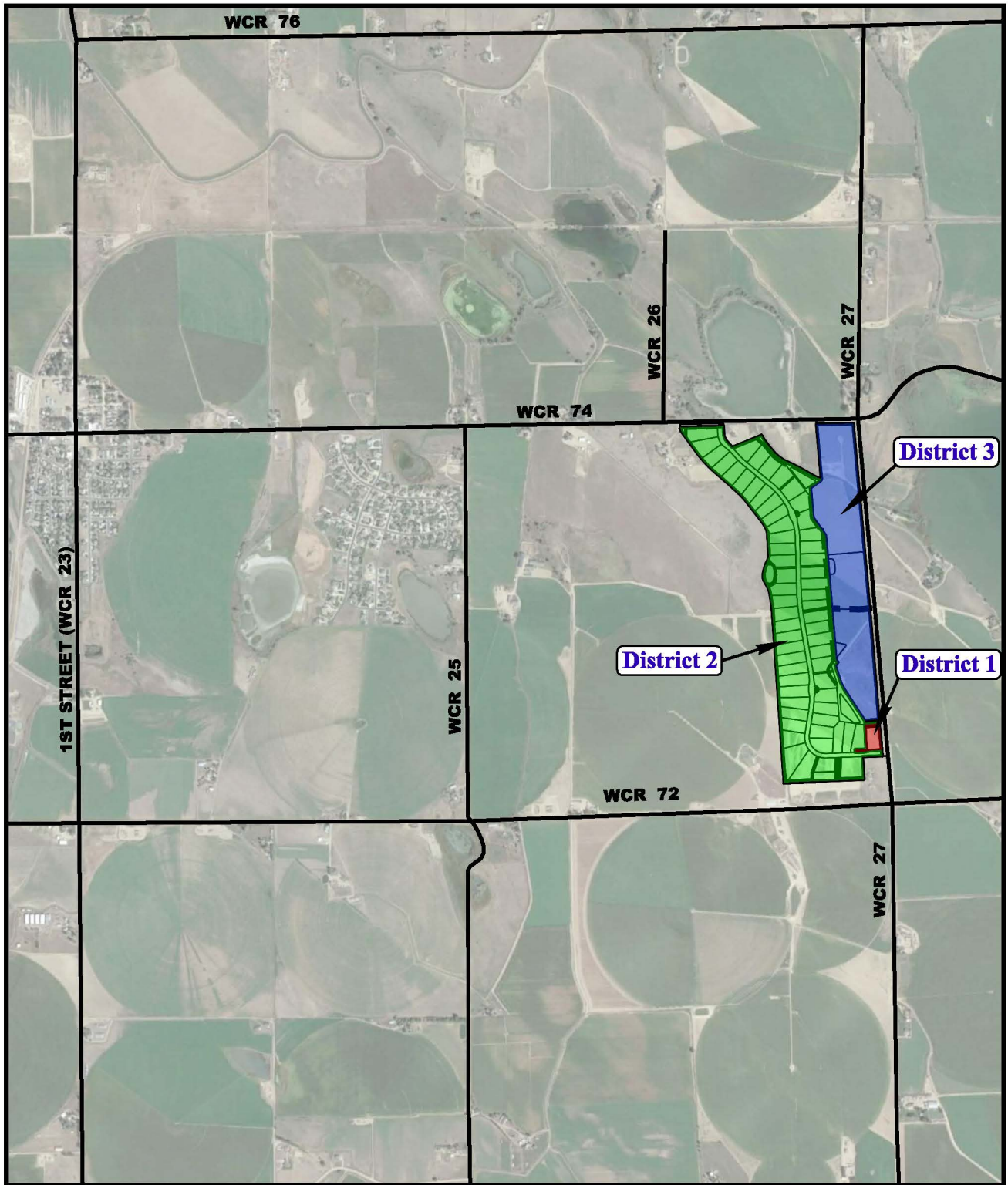
DATE DRAWN: 12-23-2016

**District and Director
Parcel Boundaries**



UELS, LLC
Corporate Office * 85 South 200 East
Vernal, UT 84078 * (435) 789-1017

GOLDEN EAGLE ACRES METROPOLITAN DISTRICTS



VICINITY MAP

**RESIDENTIAL SUBDIVISION
SECTION 6, T6N, R66W, 6th P.M.
TOWN OF SEVERANCE
WELD COUNTY, COLORADO**

REV: 8-15-18

DRAWN BY: D.B.S.	DATE DRAWN: 01-23-2017
	SCALE: 1" = 2000'



UELS, LLC
Corporate Office * 85 South 200 East
Vernal, UT 84078 * (435) 789-1017